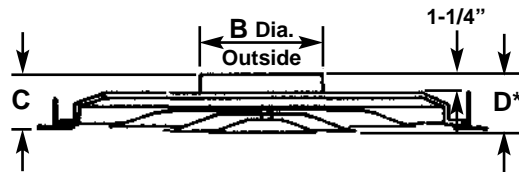
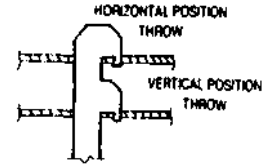
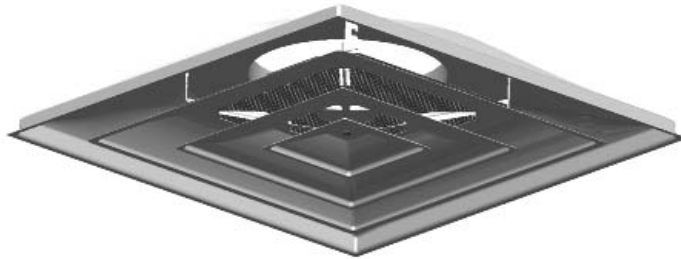


Standard Dimensions
(Metric on Reverse Side)

CARNES COMPANY 448 S. Main St., P. O. Box 930040, Verona, WI 53593-0040 Phone: (608)845-6411 Fax: (608)845-6504 www.carnes.com



**"D" dimension shown is vertical pattern. For horizontal pattern, ADD 5/8".



SIZE 12



SIZE 24

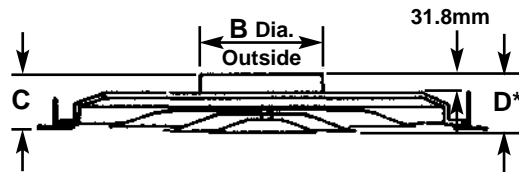
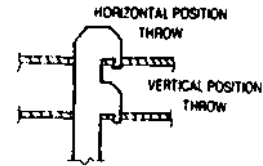
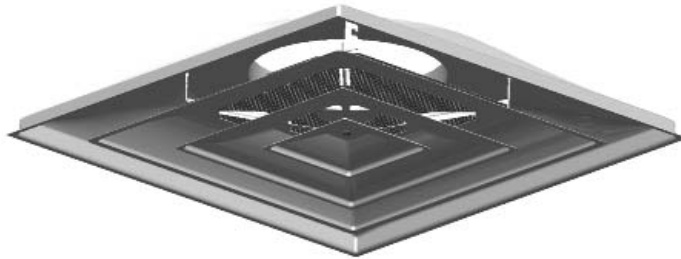
DIMENSIONS LISTED IN INCHES

Model Number	Nominal Duct Size (Dia.)	Nominal Louvered Area	Panel Size	Panel Mount						Number of Cones
				A	B	C	D*	F	G	
SJTB 1205	5	12 x 12	12 x 12	11-3/4	4-7/8	3	3-1/4	11-3/4	11-3/4	2
SJTB 1206	6	12 x 12	12 x 12	11-3/4	5-7/8	3	3-1/4	11-3/4	11-3/4	2
SJTB 1208	8	12 x 12	12 x 12	11-3/4	7-7/8	3	3-1/4	11-3/4	11-3/4	2
SJTB 1205-Opt. 12	5	12 x 12	12 x 24	11-3/4	4-7/8	3	3-1/4	11-3/4	23-3/4	2
SJTB 1206-Opt. 12	6	12 x 12	12 x 24	11-3/4	5-7/8	3	3-1/4	11-3/4	23-3/4	2
SJTB 1208-Opt. 12	8	12 x 12	12 x 24	11-3/4	7-7/8	3	3-1/4	11-3/4	23-3/4	2
SJTB 1205-Opt. 14	5	12 x 12	12 x 48	11-3/4	4-7/8	3	3-1/4	11-3/4	47-3/4	2
SJTB 1206-Opt. 14	6	12 x 12	12 x 48	11-3/4	5-7/8	3	3-1/4	11-3/4	47-3/4	2
SJTB 1208-Opt. 14	8	12 x 12	12 x 48	11-3/4	7-7/8	3	3-1/4	11-3/4	47-3/4	2
SJTB 1205-Opt. 22	5	12 x 12	24 x 24	11-3/4	4-7/8	3	3-1/4	23-3/4	23-3/4	2
SJTB 1206-Opt. 22	6	12 x 12	24 x 24	11-3/4	5-7/8	3	3-1/4	23-3/4	23-3/4	2
SJTB 1208-Opt. 22	8	12 x 12	24 x 24	11-3/4	7-7/8	3	3-1/4	23-3/4	23-3/4	2
SJTB 1205-Opt. 24	5	12 x 12	24 x 48	11-3/4	4-7/8	3	3-1/4	23-3/4	47-3/4	2
SJTB 1206-Opt. 24	6	12 x 12	24 x 48	11-3/4	5-7/8	3	3-1/4	23-3/4	47-3/4	2
SJTB 1208-Opt. 24	8	12 x 12	24 x 48	11-3/4	7-7/8	3	3-1/4	23-3/4	47-3/4	2
SJTB 2406	6	24 x 24	24 x 24	23-3/4	5-7/8	4-1/2	5-3/16	23-3/4	23-3/4	3
SJTB 2407	7	24 x 24	24 x 24	23-3/4	6-7/8	4-1/2	5-3/16	23-3/4	23-3/4	3
SJTB 2408	8	24 x 24	24 x 24	23-3/4	7-7/8	4-1/2	5-3/16	23-3/4	23-3/4	3
SJTB 2410	10	24 x 24	24 x 24	23-3/4	9-7/8	4-1/2	5-3/16	23-3/4	23-3/4	3
SJTB 2412	12	24 x 24	24 x 24	23-3/4	11-7/8	4-1/2	5-3/16	23-3/4	23-3/4	3
SJTB 2414	14	24 x 24	24 x 24	23-3/4	13-7/8	4-1/2	5-3/16	23-3/4	23-3/4	3
SJTB 2406-Opt. 24	6	24 x 24	24 x 48	23-3/4	5-7/8	4-1/2	5-3/16	23-3/4	47-3/4	3
SJTB 2407-Opt. 24	7	24 x 24	24 x 48	23-3/4	6-7/8	4-1/2	5-3/16	23-3/4	47-3/4	3
SJTB 2408-Opt. 24	8	24 x 24	24 x 48	23-3/4	7-7/8	4-1/2	5-3/16	23-3/4	47-3/4	3
SJTB 2410-Opt. 24	10	24 x 24	24 x 48	23-3/4	9-7/8	4-1/2	5-3/16	23-3/4	47-3/4	3
SJTB 2412-Opt. 24	12	24 x 24	24 x 48	23-3/4	11-7/8	4-1/2	5-3/16	23-3/4	47-3/4	3
SJTB 2414-Opt. 24	14	24 x 24	24 x 48	23-3/4	13-7/8	4-1/2	5-3/16	23-3/4	47-3/4	3

- NOTES:**
1. The inner assembly is easily removable by compressing the locking spring and rotating counter clockwise.
 2. To gain access for damper adjustment, remove the plug button on the center cone of the inner assembly.
 3. Horizontal to vertical air pattern is made by changing the position of the inner assembly.
 4. Size 24 utilizes a perforated panel in front of the inlet
 5. Standard finish is #11 White Electrocoat Enamel.

Metric Dimensions
(Standard on Reverse Side)

CARNES COMPANY 448 S. Main St., P. O. Box 930040, Verona, WI 53593-0040 Phone: (608)845-6411 Fax: (608)845-6504 www.carnes.com



**"D" dimension shown is vertical pattern. For horizontal pattern, ADD 15.9mm.



SIZE 12



SIZE 24

DIMENSIONS LISTED IN MILLIMETERS

Model Number	Nominal Duct Size (Dia.)	Nominal Louvered Area	Panel Size	Panel Mount						Number of Cones
				A	B	C	D*	F	G	
SJTB 1205	127	305 x 305	305 x 305	298.5	123.8	76.2	82.6	298.5	298.5	2
SJTB 1206	152	305 x 305	305 x 305	298.5	149.2	76.2	82.6	298.5	298.5	2
SJTB 1208	203	305 x 305	305 x 305	298.5	200.0	76.2	82.6	298.5	298.5	2
SJTB 1205-Opt. 12	127	305 x 305	305 x 610	298.5	123.8	76.2	82.6	298.5	603.3	2
SJTB 1206-Opt. 12	152	305 x 305	305 x 610	298.5	149.2	76.2	82.6	298.5	603.3	2
SJTB 1208-Opt. 12	203	305 x 305	305 x 610	298.5	200.0	76.2	82.6	298.5	603.3	2
SJTB 1205-Opt. 14	127	305 x 305	305 x 1219	298.5	123.8	76.2	82.6	298.5	1212.9	2
SJTB 1206-Opt. 14	152	305 x 305	305 x 1219	298.5	149.2	76.2	82.6	298.5	1212.9	2
SJTB 1208-Opt. 14	203	305 x 305	305 x 1219	298.5	200.0	76.2	82.6	298.5	1212.9	2
SJTB 1205-Opt. 22	127	305 x 305	610 x 610	298.5	123.8	76.2	82.6	603.3	603.3	2
SJTB 1206-Opt. 22	152	305 x 305	610 x 610	298.5	149.2	76.2	82.6	603.3	603.3	2
SJTB 1208-Opt. 22	203	305 x 305	610 x 610	298.5	200.0	76.2	82.6	603.3	603.3	2
SJTB 1205-Opt. 24	127	305 x 305	610 x 1219	298.5	123.8	76.2	82.6	603.3	1212.9	2
SJTB 1206-Opt. 24	152	305 x 305	610 x 1219	298.5	149.2	76.2	82.6	603.3	1212.9	2
SJTB 1208-Opt. 24	203	305 x 305	610 x 1219	298.5	200.0	76.2	82.6	603.3	1212.9	2
SJTB 2406	152	610 x 610	610 x 610	603.3	149.2	114.3	131.8	603.3	603.3	3
SJTB 2407	178	610 x 610	610 x 610	603.3	174.6	114.3	131.8	603.3	603.3	3
SJTB 2408	203	610 x 610	610 x 610	603.3	200.0	114.3	131.8	603.3	603.3	3
SJTB 2410	254	610 x 610	610 x 610	603.3	250.8	114.3	131.8	603.3	603.3	3
SJTB 2412	305	610 x 610	610 x 610	603.3	301.6	114.3	131.8	603.3	603.3	3
SJTB 2414	356	610 x 610	610 x 610	603.3	352.4	114.3	131.8	603.3	603.3	3
SJTB 2406-Opt. 24	152	610 x 610	610 x 1219	603.3	149.2	114.3	131.8	603.3	1212.9	3
SJTB 2407-Opt. 24	178	610 x 610	610 x 1219	603.3	174.6	114.3	131.8	603.3	1212.9	3
SJTB 2408-Opt. 24	203	610 x 610	610 x 1219	603.3	200.0	114.3	131.8	603.3	1212.9	3
SJTB 2410-Opt. 24	254	610 x 610	610 x 1219	603.3	250.8	114.3	131.8	603.3	1212.9	3
SJTB 2412-Opt. 24	305	610 x 610	610 x 1219	603.3	301.6	114.3	131.8	603.3	1212.9	3
SJTB 2414-Opt. 24	356	610 x 610	610 x 1219	603.3	352.4	114.3	131.8	603.3	1212.9	3

- NOTES:**
1. The inner assembly is easily removable by compressing the locking spring and rotating counter clockwise.
 2. To gain access for damper adjustment, remove the plug button on the center cone of the inner assembly.
 3. Horizontal to vertical air pattern is made by changing the position of the inner assembly.
 4. Size 24 utilizes a perforated panel in front of the inlet
 5. Standard finish is #11 White Electrocoat Enamel.