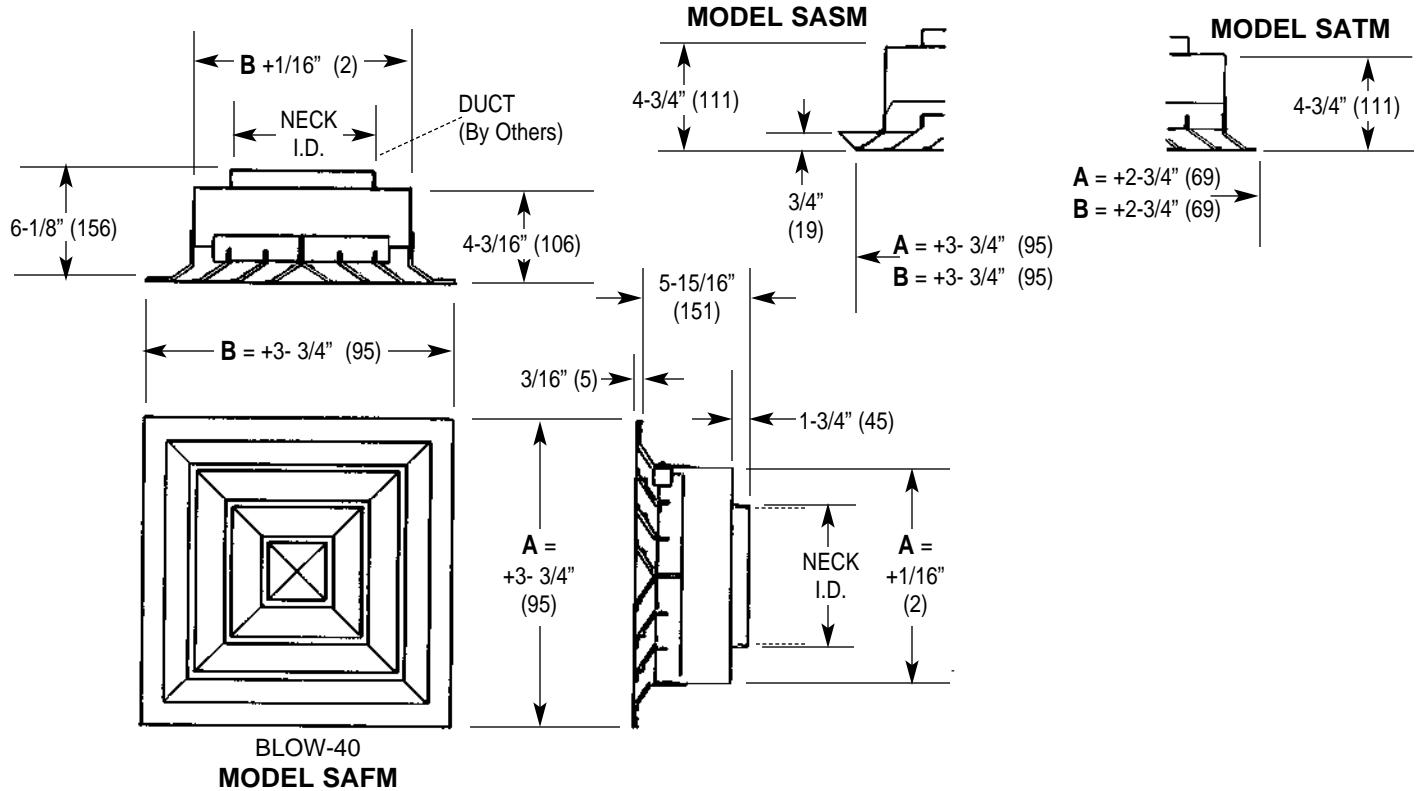


Imperial [IP] Dimensions
Metric (SI) in Parentheses

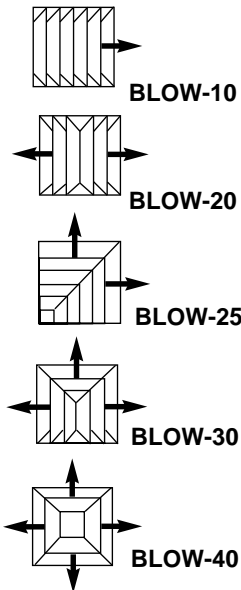
CARNES COMPANY 448 S. Main St., P. O. Box 930040, Verona, WI 53593-0040 Phone: (608)845-6411 Fax: (608)845-6504 www.carnes.com



NOTE: MINIMUM CEILING OPENING **A** +2-1/4" (57) and **B** +2-1/4" (57)

DIMENSIONS LISTED IN INCHES (Millimeters)

SQUARE



Neck I. D.	Size A x B
4" (102)	6" x 6" (152 x 152)
5" (127)	6" x 6" (152 x 152)
6" (152)	6" x 6" (152 x 152)
8" (203)	9" x 9" (229 x 229)
9" (229)	9" x 9" (229 x 229)
10" (254)	12" x 12" (305 x 305)
12" (305)	12" x 12" (305 x 305)

Neck I. D.	Size A x B
12" (305)	15" x 15" (381 x 381)
14" (356)	15" x 15" (381 x 381)
15" (381)	15" x 15" (381 x 381)
16" (406)	18" x 18" (457 x 457)
18" (457)	18" x 18" (457 x 457)
20" (508)	21" x 21" (533 x 533)
21" (533)	21" x 21" (533 x 533)

Note: Standard finish is #11 Bright White.