

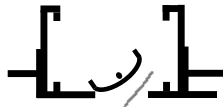
Imperial [IP] Dimensions
Metric (SI) in Parentheses

CARNES COMPANY 448 S. Main St., P. O. Box 930040, Verona, WI 53593-0040 Phone: (608)845-6411 Fax: (608)845-6504 www.carnes.com

SLOT PATTERN ADJUSTMENTS



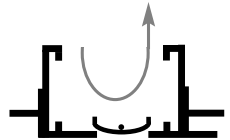
PERPENDICULAR



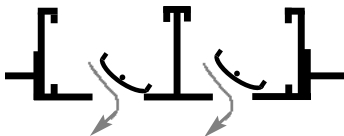
PARALLEL LEFT



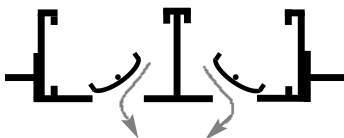
PARALLEL RIGHT



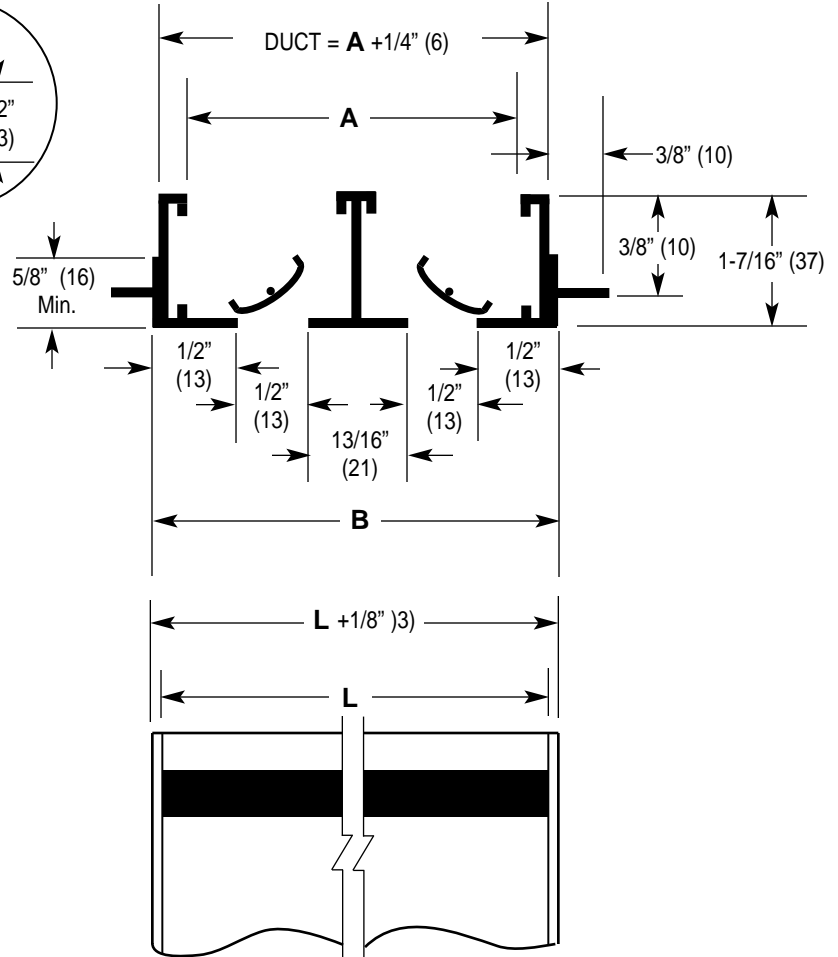
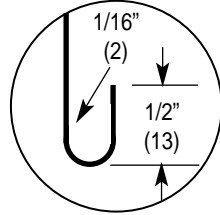
BLANK OFF



PARALLEL ONE-WAY
MULTIPLE SLOT



PARALLEL TWO-WAY
MULTIPLE SLOT



DIMENSIONS LISTED IN INCHES (Millimeters)

Dim.	No. of Slots							
	1	2	3	4	5	6	7	8
A	1-3/8 (35)	2-11/16 (68)	4 (102)	5-5/16 (135)	6-5/8 (168)	7-15/16 (202)	9-1/4 (235)	10-9/16 (243)
B	1-1/2 (38)	2-13/16 (71)	4-1/8 (105)	5-7/16 (138)	6-3/4 (172)	8-1/16 (205)	9-3/4 (248)	10-11/16 (272)

- Notes:**
1. Duct length is "L" + 1/4" (6).
 2. Order units 1/8" (3) shorter than grid size.
 3. Units have flat end caps that add 1/8" (3) to unit length.
 4. Maximum length "L" for one piece construction is 72" (1829).