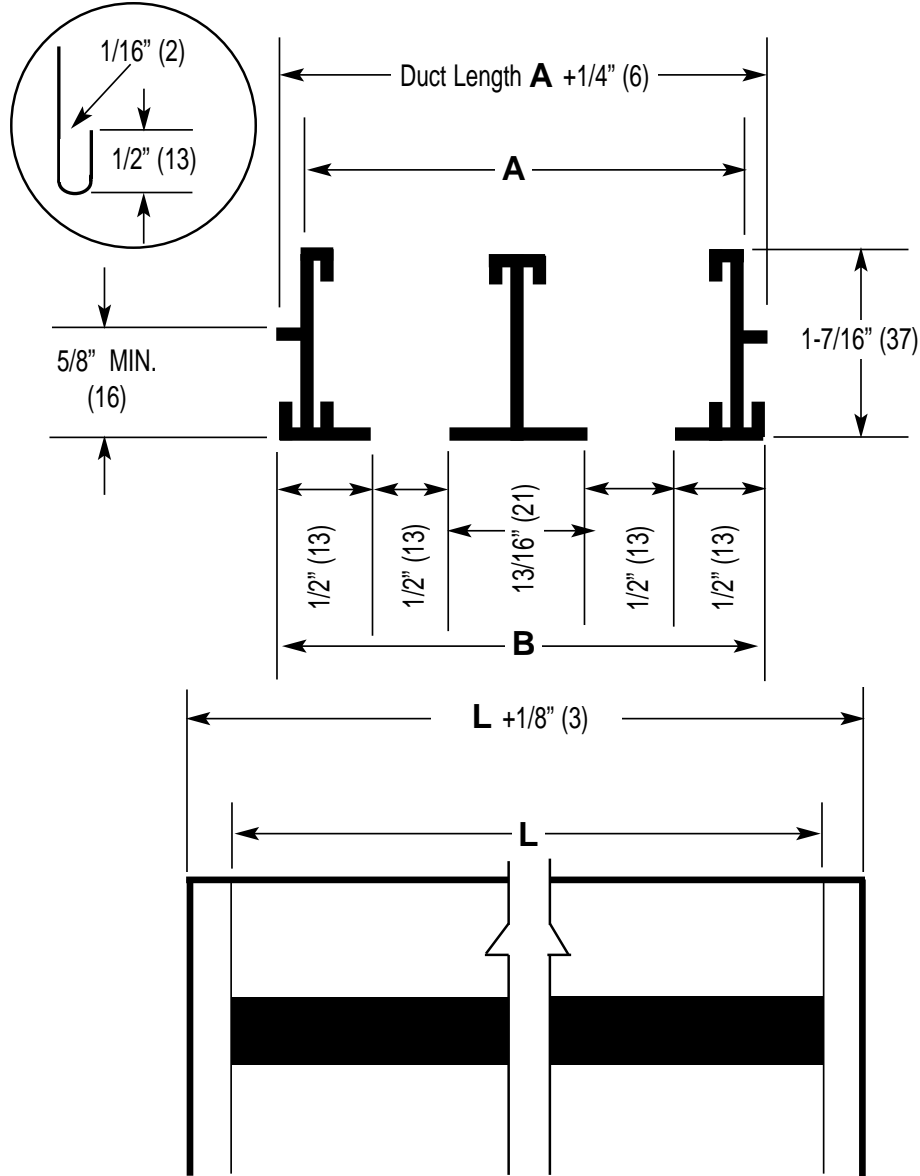


**IP [English] Dimensions**  
*SI (Metric) In Parentheses*

CARNES COMPANY, 448 S. Main St., P. O. Box 930040, Verona, WI 53593-0040 Phone: 608/845-6411 Fax: 608/845-6504 E-Mail: carnes@carnes.com www.carnes.com



Dim.	Number of Slots							
	1	2	3	4	5	6	7	8
A	1-3/8" (35)	2-11/16" (68)	4" (102)	5-5/16" (135)	6-5/8" (168)	7-15/16" (202)	9-1/4" (235)	10-9/16" (268)
B	1-1/2" (38)	2-13/16" (71)	4-1/8" (105)	5-7/16" (138)	6-3/4" (172)	8-1/16" (205)	9-3/4" (238)	10-11/16" (272)

- NOTES:**
1. Duct length is "L" plus 1/4" (6mm).
  2. Units have flat end caps that add 1/8" (3mm) to unit length.
  3. Maximum length "L" for one piece construction is 72" (1829mm).