

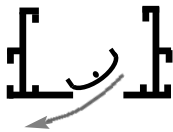
Imperial [IP] Dimensions
Metric (SI) in Parentheses

CARNES COMPANY 448 S. Main St., P. O. Box 930040, Verona, WI 53593-0040 Phone: (608)845-6411 Fax: (608)845-6504 www.carnes.com

SLOT PATTERN ADJUSTMENTS



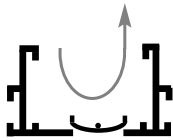
PERPENDICULAR



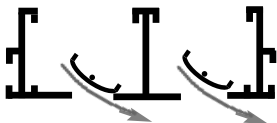
PARALLEL LEFT



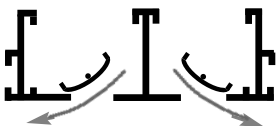
PARALLEL RIGHT



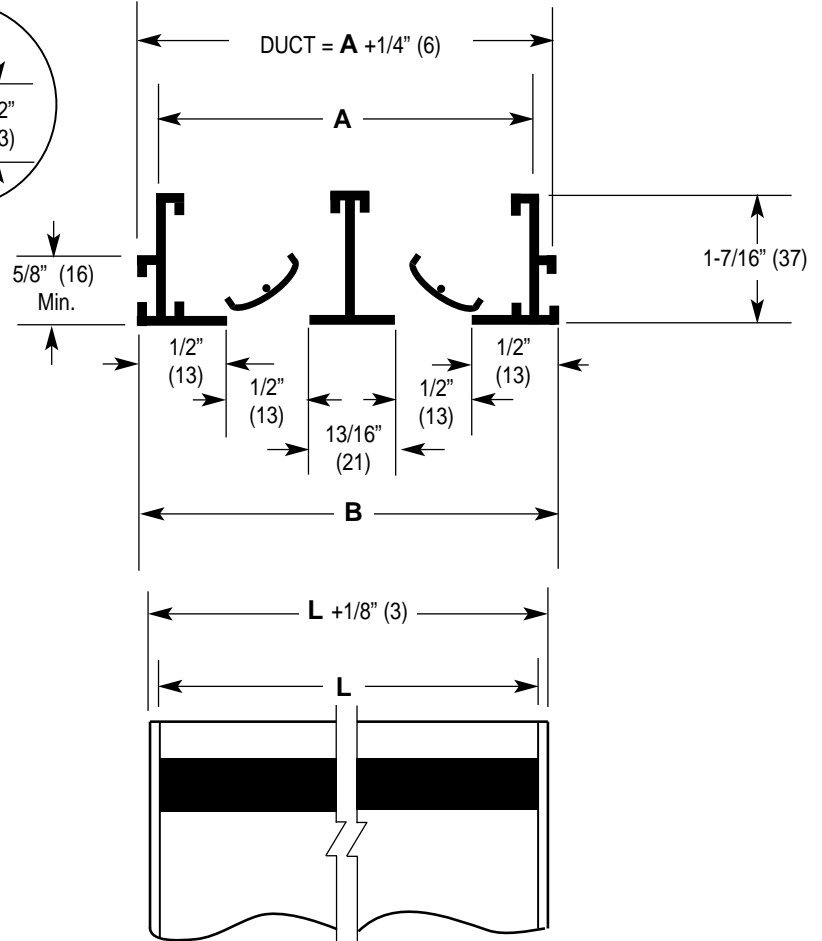
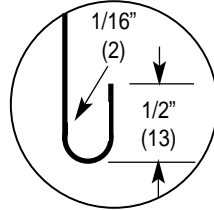
BLANK OFF



PARALLEL ONE-WAY
MULTIPLE SLOT



PARALLEL TWO-WAY
MULTIPLE SLOT



DIMENSIONS LISTED IN INCHES (Millimeters)

| Dim. | No. of Slots | | | | | | | |
|------|----------------|------------------|-----------------|------------------|-----------------|-------------------|-----------------|--------------------|
| | 1 | 2 | 3 | 4 | 5 | 6 | 7 | 8 |
| A | 1-3/8" (35) | 2-11/16" (68) | 4" (102) | 5-5/16" (135) | 6-5/8" (168) | 7-15/16" (202) | 9-1/4" (235) | 10-9/16" (268) |
| B | 1-1/2" (38) | 2-13/16" (71) | 4-1/8" (105) | 5-7/16" (138) | 6-3/4" (172) | 8-1/16" (205) | 9-3/4" (238) | 10-11/16" (272) |

- Notes:**
1. Duct length is "L" + 1/4" (6).
 2. Units have flat end caps that add 1/8" (3) to unit length.
 3. Maximum length "L" for one piece construction is 72" (1829).