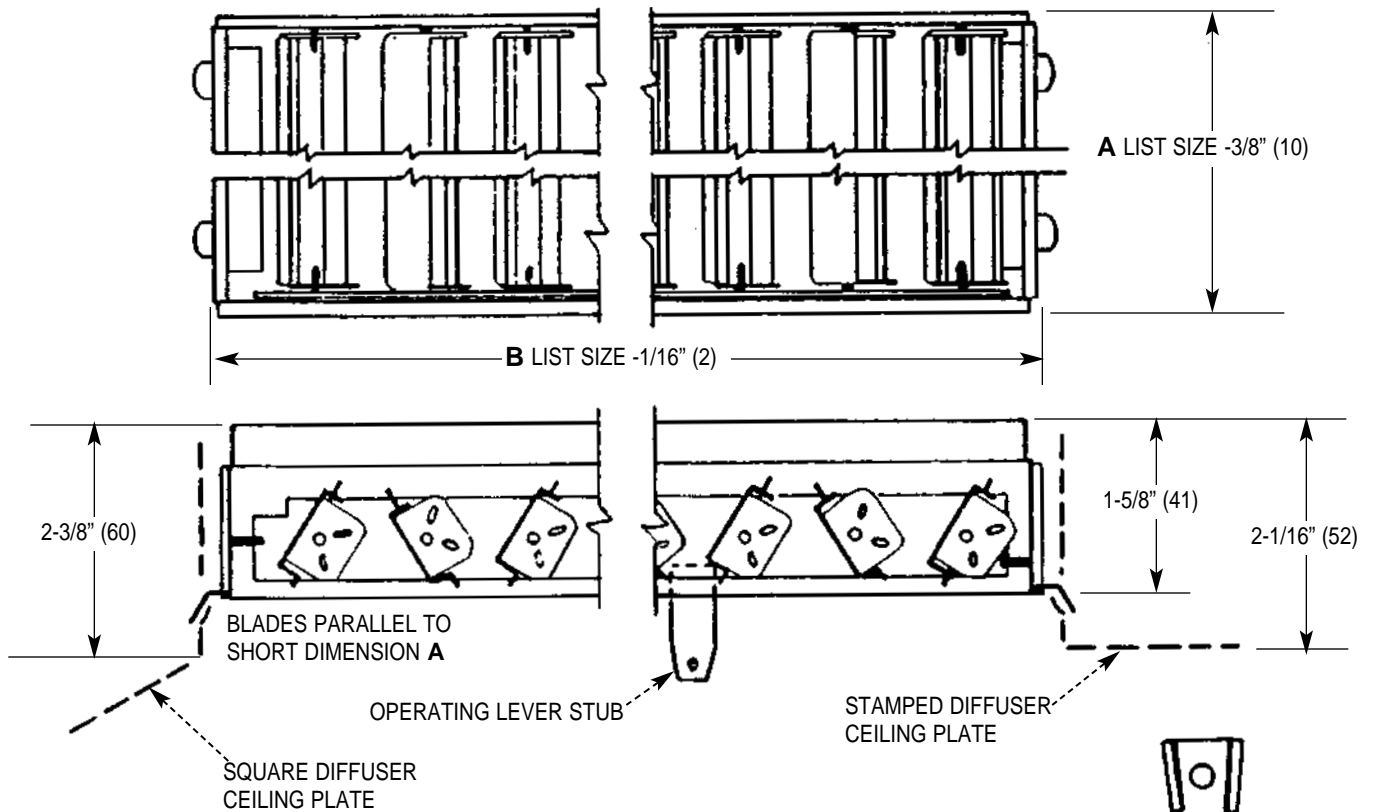


Model KXKA Steel Opposed Blade Damper For Steel Square and Rectangular Diffuser and Square Neck Stamped Perforated Diffusers

Imperial [IP] Dimensions
Metric (SI) in Parentheses

CARNES COMPANY 448 S. Main St., P. O. Box 930040, Verona, WI 53593-0040 Phone: (608)845-6411 Fax: (608)845-6504 www.carnes.com



| DIMENSIONS LISTED IN INCHES (Millimeters) | | |
|---|----------------------|----------------------|
| SIZE A x B | SIZE A x B | SIZE A x B |
| 6 x 6 (152 x 152) | 9 x 21 (229 x 533) | 15 x 21 (381 x 533) |
| 6 x 9 (152 x 229) | 9 x 24 (229 x 610) | 15 x 24 (381 x 610) |
| 6 x 12 (152 x 305) | 10 x 10 (254 x 254)* | 16 x 16 (406 x 406)* |
| 6 x 15 (152 x 381) | 10 x 22 (254 x 559)* | 18 x 18 (457 x 457) |
| 6 x 18 (152 x 457) | 12 x 12 (305 x 305) | 18 x 21 (457 x 533) |
| 6 x 21 (152 x 533) | 12 x 15 (305 x 381) | 18 x 24 (457 x 610) |
| 6 x 24 (152 x 610) | 12 x 18 (305 x 457) | 21 x 21 (533 x 533) |
| 8 x 8 (203 x 203)* | 12 x 21 (305 x 533) | 21 x 24 (533 x 610) |
| 9 x 9 (229 x 229) | 12 x 24 (305 x 610) | 22 x 22 (559 x 559)* |
| 9 x 12 (229 x 305) | 14 x 14 (356 x 356)* | 24 x 24 (610 x 610) |
| 9 x 15 (229 x 381) | 15 x 15 (381 x 381) | |
| 9 x 18 (229 x 457) | 15 x 18 (381 x 457) | |

*For use on stamped perforated ONLY.

Notes:

1. Model KXKAS — Blades parallel to short dimension.
2. Model KXKAL — Blades parallel to long distance.
3. For square diffusers with blow patterns 12 and 22 use Model KXKAL with long blades.
4. Standard finish is #04 Gray electrocoat enamel.

