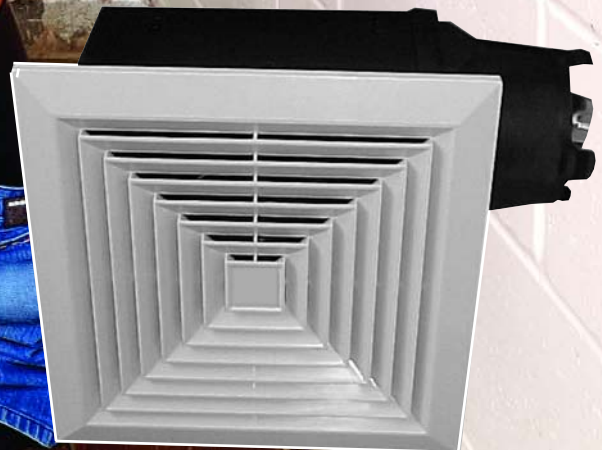


Need a

BETTER

**Bathroom
Fan?**



ASX CEILING FANS – Features

ASX Models VCDD and VCDK Ceiling Ventilators have been designed to give quality conscious architects, design engineers, builders and specifiers the ultimate in heavy duty, quiet ventilation.

Available from 100 to 3500 CFM, all units use centrifugal blower wheels and low RPM motors on resilient mounts. Most have acoustic insulation inside a rugged, heavy duty housing for further sound reduction.

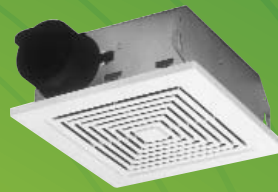
Perfect for offices, conference rooms, bathrooms, hospital rooms... anywhere quiet, high-capacity ventilation is needed.

Their features include:

- Available in standard ceiling fan models and dedicated in-line models.
- Low RPM motors mounted on resilient mounts for quiet, vibration-free operation.
- Motors designed for continuous operation permanently lubricated.
- Acoustic insulation inside rugged, heavy gauge galvanized steel housing (except sizes 005C and 008C and in-line units).
- May be installed in ceiling or wall (size permitting).
- Balanced blower wheels for extremely low sound levels.
- Attractive, low profile grilles.
- May be ducted horizontally, vertically or as an in-line blower.
- Quiet, built-in backdraft dampers.
- AMCA Licensed.
- UL and cUL Listed.

Available Accessories Include:

- Radiation Dampers.
- Wall Caps.
- Roof Caps.
- Inline Adapters.
- Vibration Isolators.
- Brick Vents.
- Speed Controllers.
- Time Delay Switches.



Model VCDD 005C



Model VCDD 008C



Models
VCDD 010-030C



Models
VCDD 010-030I



Models
VCDD 040-070C



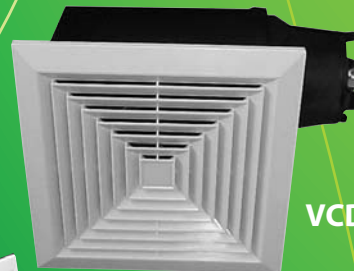
Models
VCDD 040-070I



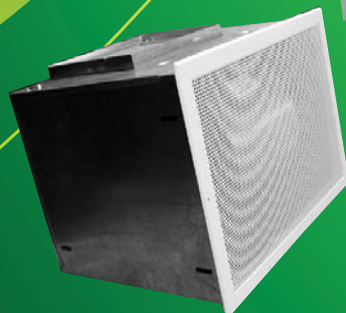
Models VCDD 090-150C



Models
VCDD 090-150I



Models
VCDK 005C-015C



Models VCDK 040-170C



Models VCDK 040-170I

ASX CEILING FANS – Performance Data — VCDD

Standard Ceiling Fan Arrangement - VCDD

CFM/SONES — AT STATIC PRESSURE (P _S - Inches of H ₂ O)															
Model No.	Nom. Voltage	Standard Arrangement	0.0" P _S	.10" P _S	.125" P _S	.250" P _S	.375" P _S	.50" P _S	.625" P _S	.750" P _S	.875" P _S	1.0" P _S	Nom. RPM	Amps @ 60 Hz	Watts
VCDD005C	120 VAC	CFM Horizontal SONES Horz.	52 3.9	49 4.3	47 4.4	42 4.6	29 5.5						1870	0.7	48
VCDD008C	120 VAC	CFM Horizontal SONES Horz.	89 3.9	81 3.8	80 3.8	68 3.8	36 3.9						1280	0.5	48
VCDD010C	120 VAC	CFM Horizontal SONES Horz.	136 0.5	115 0.8	109 0.9	93 1.3	80 1.8	65 2.3	44 3.0	12 3.2			640	1.1	77
VCDD015C	120 VAC	CFM Horizontal SONES Horz.	181 1.3	161 1.4	157 1.5	141 2.2	132 2.6	124 3.1	114 3.6	94 4.1	62 4.6		710	1.4	102
VCDD020C	120 VAC	CFM Horizontal SONES Horz.	231 1.6	214 1.8	210 1.7	196 2.3	186 2.9	177 3.5	165 4.1	144 4.9	113 5.3	51 5.3	740	1.8	131
VCDD025C	120 VAC	CFM Horizontal SONES Horz.	272 2.1	261 2.3	259 2.2	250 2.9	242 3.3	233 3.9	218 4.4	201 4.8	165 5.5	99 5.8	830	2.2	169
VCDD030C	120 VAC	CFM Horizontal SONES Horz.	312 2.8	309 2.9	308 2.9	303 3.3	296 3.5	287 3.9	273 4.3	254 4.7	219 5.1	125 5.6	905	2.7	207
VCDD040C	120 VAC	CFM Horizontal SONES Horz.	480 2.0	442 2.4	434 2.3	388 2.8	344 3.3	299 3.8	229 4.5	182 4.8	114 5.4	33 5.6	735	1.6	171
VCDD050C	120 VAC	CFM Horizontal SONES Horz.	538 3.0	520 3.1	514 3.3	491 3.6	463 4.0	434 4.4	389 5.0	339 5.7	282 6.2	186 6.7	810	2.2	221
VCDD070C	120 VAC	CFM Horizontal SONES Horz.	722 4.5	704 4.6	701 4.7	667 4.8	640 5.0	607 5.2	571 5.6	534 6.2	453 7.1	333 7.2	960	2.8	300
VCDD090C	120 VAC	CFM Horizontal SONES Horz.	918 3.8	905 4.0	901 4.1	877 4.0	842 4.2	793 4.3	725 4.4	636 4.9	536 4.5	390 5.3	650	2.7	289
VCDD150C	120 VAC	CFM Horizontal SONES Horz.	1578 8.6	1526 8.4	1513 8.4	1438 8.1	1371 7.5	1285 7.0	1198 6.7	1103 6.2	1000 5.8	816 5.8	955	6.0	613

Performance ratings include the effect of inlet grille and backdraft damper in the airstream. Speed (RPM) shown is nominal. Performance is based on actual speed of test. The sound ratings shown are loudness values in fan sones at 5' (1.5m) in a hemispherical free field calculated per AMCA Std. 301. Values shown are for installation type B: free inlet fan sone levels. Performance certified is for installation type B: free inlet, ducted outlet.

Standard In-Line Fan Arrangement - VCDD

CFM/SONES — AT STATIC PRESSURE (P _S - Inches of H ₂ O)															
Model No.	Nom. Voltage	Standard Arrangement	0.0" P _S	.10" P _S	.125" P _S	.250" P _S	.375" P _S	.50" P _S	.625" P _S	.750" P _S	.875" P _S	1.0" P _S	Nom. RPM	Amps @ 60 Hz	Watts
VCDD010I	120 VAC	CFM Std. Thr. SONES Std. Thr.	121 .5	108 .7	106 .7	97 1.1	93 1.4	86 1.8	70 2.1	44 2.4	17 2.6		760	1.1	87
VCDD015I	120 VAC	CFM Std. Thr. SONES Std. Thr.	153 .9	148 1.0	147 1.1	140 1.4	134 1.6	125 1.9	111 2.1	91 2.2	54 2.4	18 2.6	920	1.3	100
VCDD020I	120 VAC	CFM Std. Thr. SONES Std. Thr.	205 1.7	196 1.9	195 1.9	190 2.1	185 2.3	175 2.4	158 3.0	135 3.3	96 3.4	47 3.4	865	1.8	127
VCDD025I	120 VAC	CFM Std. Thr. SONES Std. Thr.	248 2.0	245 2.3	245 2.3	241 2.6	235 2.8	224 3.2	208 3.4	183 3.6	141 3.9	84 3.8	1005	2.1	166
VCDD030I	120 VAC	CFM Std. Thr. SONES Std. Thr.	300 2.9	294 3.0	293 3.1	285 3.3	274 3.4	259 3.5	243 3.6	214 3.7	168 4.0	113 3.9	1145	2.6	212
VCDD040I	120 VAC	CFM Std. Thr. SONES Std. Thr.	450 1.4	415 1.6	406 1.6	360 1.9	313 2.2	271 2.6	223 2.9	167 3.4	90 3.6	6 3.9	775	1.4	146
VCDD050I	120 VAC	CFM Std. Thr. SONES Std. Thr.	546 2.4	526 2.4	519 3.4	496 3.7	472 3.9	447 3.8	407 3.9	364 4.0	306 4.3	232 4.3	890	2.2	232
VCDD070I	120 VAC	CFM Std. Thr. SONES Std. Thr.	704 3.6	686 3.8	681 3.7	656 3.9	631 4.0	604 4.2	575 4.3	533 4.4	480 4.9	412 5.0	1090	2.9	313
VCDD090I	120 VAC	CFM Std. Thr. SONES Std. Thr.	930 3.7	902 3.8	894 3.8	853 3.8	807 3.7	754 3.8	685 3.9	587 4.0	442 4.0	300 4.1	810	3.0	306
VCDD150I	120 VAC	CFM Std. Thr. SONES Std. Thr.	1275 6.8	1228 6.8	1214 6.7	1152 6.5	1092 6.3	1029 6.0	958 6.8	871 6.0	764 6.0	631 6.1	1065	5.0	468

Performance ratings include the effects of backdraft damper in the airstream. Speed (RPM) shown is nominal. Performance is based on actual speed of test. The sound ratings shown are loudness values in fan sones at 5' (1.5m) in a hemispherical free field calculated per AMCA Std. 301. Values shown are for installation type D: ducted inlet, ducted outlet. Ratings do not include the effect of duct end correction. Performance ratings include the effects of 18 feet of round inlet duct and, if needed, a rectangular to round duct transition in the airstream. Performance certified is for installation type D: ducted inlet, ducted outlet.

VCDD210I	120 VAC	CFM Std. Thr. SONES Std. Thr.	1891 10.3	1803 9.8	1791 9.4	1657 9.0	1508 8.6	1347 9.1	1165 8.9	808 7.0	284 6.7		965	5.8	567
VCDD330I	240VAC	CFM Std. Thr. SONES Std. Thr.	3605 15.3	3498 14.8	3452 14.5	3278 14.1	3073 13.1	2893 12.8	2679 12.1	2429 11.8	2093 11.9	1693 10.8	1105	5.4	1161

ASX CEILING FANS – Performance Data — VCDK

Standard Ceiling Fan Arrangement - VCDK

CFM — AT STATIC PRESSURE (P _s - Inches of H ₂ O)														
Model No.	Nom. Voltage	Standard Arrangm't	*HVI sones	0.000" Ps	0.100" Ps	0.125" Ps	0.250" Ps	0.375" Ps	0.500" Ps	0.625" Ps	0.750" Ps	Nom. RPM	Amps @ 60 Hz	Watts
VCDK005C	120 VAC	CFM Horz. SONES Horz.	1.0	72 2.1	61 2.2	58 2.2	50 2.1	43 2.1	32 2.7			1300	.23	27
VCDK008C	120 VAC	CFM Horz. SONES Horz.	1.0	84 2.1	74 2.2	72 2.2	60 2.6	41 3.3	27 4.1			1500	.29	35
VCDK009C	120 VAC	CFM Horz. SONES Horz.	1.0	115 2.1	104 2.1	101 2.1	88 2.3	74 3.1	59 3.9			1330	.38	45
VCDK010C	120 VAC	CFM Horz. SONES Horz.	1.5	152 2.4	141 3.0	138 3.1	110 3.8	65 3.9	19 4.5			1100	.38	45
VCDK015C	120 VAC	CFM Horz. SONES Horz.	2.5	187 3.1	168 3.4	163 3.5	135 3.8	89 4.5	61 4.6			1250	.38	45

Performance ratings include the effects of inlet grille and backdraft damper in the airstream. The sound ratings shown are loudness values in fan sones at 5' (1.5m) in a hemispherical free field calculated per AMCA Standard 301. Sound values shown are for installation type B: free inlet fan sone levels. Performance certified is for installation type B: free inlet, ducted outlet. Speed (RPM) shown is nominal. Performance is based on actual speed of test.

*HVI SONE VALUES have been tested in accordance to the standard HVI test criteria by an independent, AMCA certified lab. The sone values are measurements listed in 0.5 multiples. ie. 0.7 sone is listed at 0.5 and 0.8 sone is listed at 1.0 sone.

CFM/SONES — AT STATIC PRESSURE (P _s - Inches of H ₂ O)															
Model No.	Nom. Voltage	Standard Arrangement	0.0" Ps	.10" Ps	.125" Ps	.250" Ps	.375" Ps	.50" Ps	.625" Ps	.750" Ps	.875" Ps	1.0" Ps	Nom. RPM	Amps @ 60 Hz	Watts
VCDK040C	120 VAC	CFM Horizontal SONES Horz.	481 3.4	469 3.6	466 3.7	452 3.9	437 4.2	421 4.4	406 4.7	390 5.0	363 6.2	328 6.2	1300	3.3	275
VCDK050C	120 VAC	CFM Horizontal SONES Horz.	613 4.1	604 4.3	602 4.4	590 4.6	579 4.8	568 5.1	556 5.3	540 5.7	519 6.5	498 6.5	1418	3.7	368
VCDK070C	120 VAC	CFM Horizontal SONES Horz.	804 7.0	796 7.0	794 7.0	784 7.0	774 7.0	764 7.0	754 7.0	745 7.2	735 7.5	725 7.5	1532	6.0	596
VCDK090C	120 VAC	CFM Horizontal SONES Horz.	908 5.1	893 5.3	890 5.4	872 5.6	854 5.8	836 5.9	816 6.0	736 6.1	646 6.4	489 6.6	1012	7.7	384
VCDK130C	120 VAC	CFM Horizontal SONES Horz.	1392 8.8	1364 8.8	1357 8.9	1323 8.9	1288 8.9	1254 8.7	1192 8.4	1106 8.1	963 7.7	780 7.2	1059	7.7	668
VCDK170C	120 VAC	CFM Horizontal SONES Horz.	1809 13.3	1762 12.9	1750 12.8	1691 12.3	1632 11.8	1549 11.1	1463 10.4	1309 9.6	1133 8.8	935 8.1	1105	7.7	902

Performance ratings include the effects of inlet grille and backdraft damper in the airstream. Speed (RPM) shown is nominal. Performance is based on actual speed of test. The sound ratings shown are loudness values in fan sones at 5' (1.5m) in a hemispherical free field calculated per AMCA Std. 301. Values shown are for installation type B: free inlet fan sone levels. Performance certified is for installation type B: free inlet, ducted outlet.

Standard In-Line Fan Arrangement - VCDK

CFM/SONES — AT STATIC PRESSURE (P _s - Inches of H ₂ O)															
Model No.	Nom. Voltage	Standard Arrangement	0.0" Ps	.10" Ps	.125" Ps	.250" Ps	.375" Ps	.50" Ps	.625" Ps	.750" Ps	.875" Ps	1.0" Ps	Nom. RPM	Amps @ 60 Hz	Watts
VCDK040I	120 VAC	CFM Std. Thr. SONES Std. Thr.	448 3.7	442 4.0	440 4.0	431 4.4	422 4.7	413 5.1	404 5.5	370 5.9	347 6.3	332 6.8	1360	3.3	320
VCDK050I	120 VAC	CFM Std. Thr. SONES Std. Thr.	519 5.2	515 5.3	513 5.3	506 5.4	499 5.6	492 5.7	484 6.1	477 6.6	470 7.2	454 7.8	1450	3.7	358
VCDK070I	120 VAC	CFM Std. Thr. SONES Std. Thr.	830 9.9	824 10.1	822 10.1	812 10.4	802 10.6	792 10.9	783 10.7	773 10.6	763 10.4	753 10.3	1540	6.0	609
VCDK090I	120 VAC	CFM Std. Thr. SONES Std. Thr.	819 4.8	808 5.2	806 5.3	792 5.7	779 6.2	766 6.7	753 6.9	683 7.1	578 7.4	456 7.6	1026	7.7	451
VCDK130I	120 VAC	CFM Std. Thr. SONES Std. Thr.	1279 10.5	1248 10.3	1241 10.3	1203 10.0	1164 9.8	1104 9.5	1037 9.3	957 9.1	854 8.8	660 8.6	1100	7.7	642
VCDK170I	120 VAC	CFM Std. Thr. SONES Std. Thr.	1495 12.9	1447 12.5	1436 12.4	1376 11.9	1310 11.5	1237 11.0	1156 10.5	1063 10.1	952 9.6	775 9.2	1140	7.7	694

Performance ratings include the effects of backdraft damper in the airstream. Speed (RPM) shown is nominal. Performance is based on actual speed of test. The sound ratings shown are loudness values in fan sones at 5' (1.5m) in a hemispherical free field calculated per AMCA Std. 301. Values shown are for installation type D: ducted inlet, ducted outlet. Ratings do not include the effect of duct end correction. Performance ratings include the effects of 18 feet of round inlet duct and, if needed, a rectangular to round duct transition in the airstream. Performance certified is for installation type D: ducted inlet, ducted outlet.

ASX CEILING FANS – Accessories

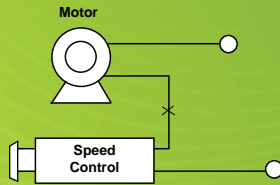


**Model VXCBT
Time Delay Switch**

Adjustable from 5-60 minutes.

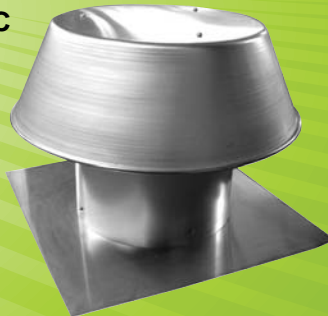
Solid State Variable Speed Switch

- Model JXUA — 3 amp
- Model JXVA — 6 amp
- Model JXEA — 8 amp
- Model VXCBS — 6 amp, 240 volt
- Model VXCMB — 6 amp, 277 volt



Model JXUA
Model JXVA
Model JXEA
Model VXCBS
Model VXCMB

VXCAF, VXCAC

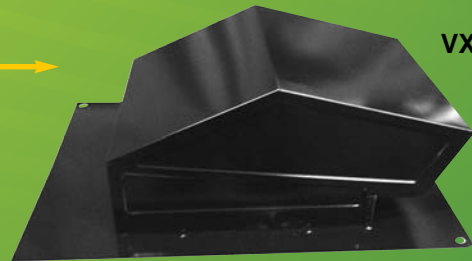


**VXCAF (Flat Roof Cap)
VXCAC (Curb Mounted Roof Cap)**

- Natural aluminum finish.
- Spun aluminum cover.
- Integral birdscreen.
- Four sizes available - 8", 12", 16" and 20".
- For use with VCDD 005-210 and VCDK 005-170.
- See ASX Submittal Sheet 26016 for dimensional details.

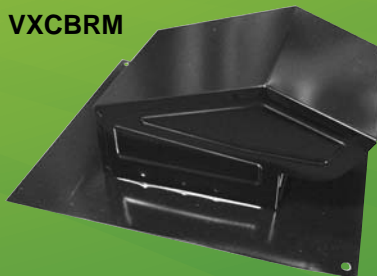
VXCBRL

- Steel black electrically bonded epoxy finish.
- Built-in backdraft damper and birdscreen.
- For 3" or 4" round duct.
- For use with VCDD and VCDK 005-009.



VXCBRL

VXCBRK, VXCBRM



VXCBRK

- Steel black electrically bonded epoxy finish.
- Built-in backdraft damper and birdscreen.
- For 6" round duct.
- For use with VCDD and VCDK 010-015.

VXCBRM

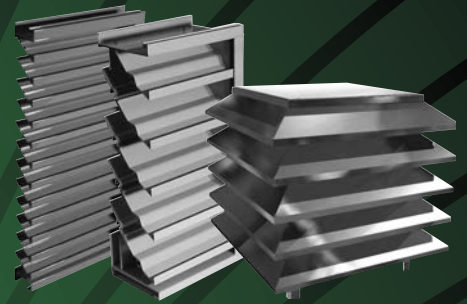
- Steel black electrically bonded epoxy finish.
- Built-in backdraft damper and birdscreen.
- For 3-1/4"x10" or up to 8" round duct.
- For use with VCDD 020-030.

Your Path to Quality HVAC Solutions

VAV Terminals



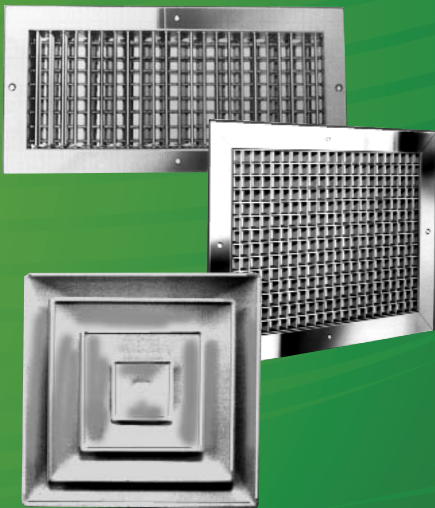
Louvers & Penthouses



Vents & Fans



Registers, Grilles & Diffusers



Energy Recovery



Humidifiers



AIR SPECIALTIES
express®

448 South Main Street
P.O. Box 930040
Verona, WI 53593-0040
Ph: 877.945.9175
Fax: 608.845.6470
Email: info@airspecialties.com

WWW.AIRSPECIALTIES.COM

D.O.

ASX-CF-FL