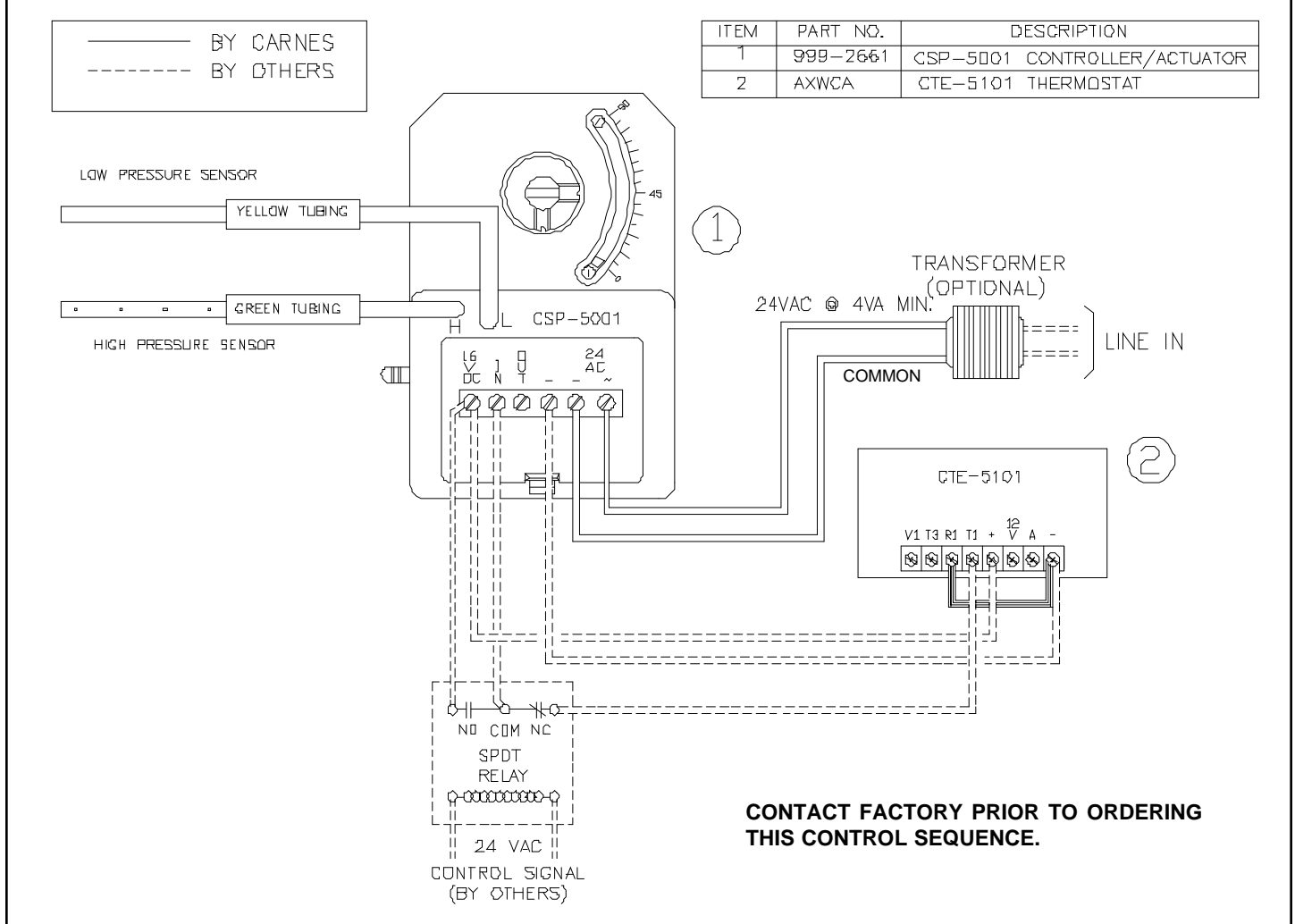


## SPECIFICATION SHEET SINGLE DUCT AIR TERMINAL WITH MORNING WARM-UP ANALOG ELECTRONIC CONTROLS ET - CONTROL OPTION **CONTACT FACTORY PRIOR TO ORDERING THIS CONTROL SEQUENCE**

CARNES COMPANY 448 S. Main St., P. O. Box 930040, Verona, WI 53593-0040 Phone: (608)845-6411 Fax: (608)845-6504 www.carnes.com



### SEQUENCE OF OPERATION

#### OCCUPIED MODE

ON A CALL FOR COOLING, AIRFLOW WILL INCREASE AS THE DAMPER OPENS TOWARDS THE MAXIMUM CFM SETTING TO SATISFY ROOM SET-POINT.

ON A CALL FOR LESS COOLING, AIRFLOW WILL DECREASE AS THE DAMPER CLOSES TOWARDS THE MINIMUM CFM SETTING TO SATISFY ROOM SET-POINT.

#### UNOCCUPIED MODE:

A 24 VAC REMOTE SIGNAL (BY OTHERS) ENERGIZES THE SPDT RELAY (BY OTHERS) INITIATING THE MORNING WARM-UP FUNCTION (MW).

IN THIS MODE THE DAMPER DRIVES TO THE FULLY OPEN POSITION WITHOUT REGARD TO THE PRESET MAXIMUM AND MINIMUM SETTING ON THE CONTROLLER

### CONTROL DIAGRAM

