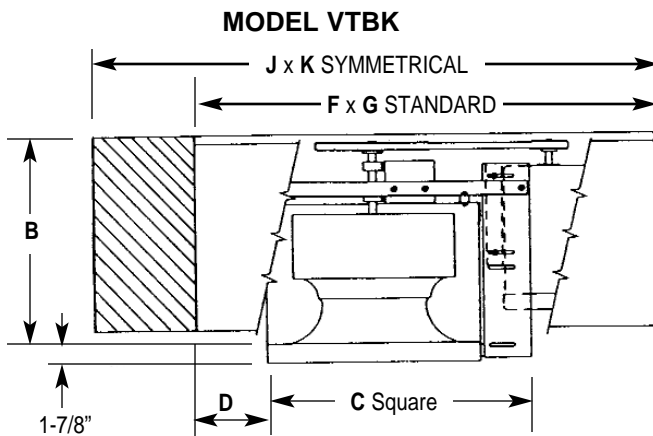


IMPERIAL [IP] DIMENSIONS
Metric (SI) On Reverse Side

CARNES COMPANY 448 S. Main St., P. O. Box 930040, Verona, WI 53593-0040 Phone: (608)845-6411 Fax: (608)845-6504 www.carnes.com



STANDARD FEATURES

- Galvanized steel housing (aluminum optional).
- Galvanized birdscreen.
- Corrosion resistant aluminum curb cap.
- Integral motor overload protection on all standard single phase motors.
- Disconnect switch on all motors except explosion proof.
- Motors thru 10 HP are factory mounted.
- Adjustable pitch V-belt drives.
- Non-overloading, backwardly inclined wheel.
- Isolated suspended motor wheel-drive assembly.
- Spark resistant construction thru size 24.
- Polished CRS fan shaft with rust inhibitive coating.
- Two belts furnished on 5 HP and up.

Field wiring of motor, disconnect and conduit are to be in accordance with specifications and local codes.

STANDARD MATERIAL AND THICKNESS

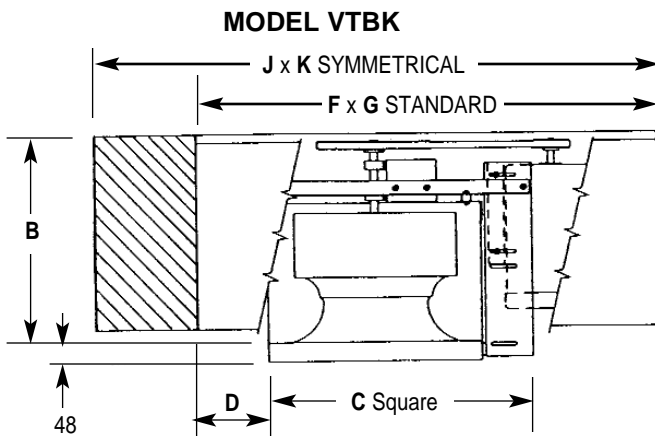
Unit Size	Housing		Lid		Curb Cap (Alum.)	Shaft Dia. (CRS)	Std. Wheel	Wind Band (Alum.)	Diffuser (Galv.)	Support Frame (Steel Angle)
	(Galv.)	(Alum.)	(Galv.)	(Alum.)						
06	22 Ga.	.063	22 Ga.	.063	.050	3/4"	Alum.	—	22 Ga.	—
08	22 Ga.	.063	22 Ga.	.063	.050	3/4"	Alum.	—	22 Ga.	—
10	22 Ga.	.063	22 Ga.	.063	.063	3/4"	Alum.	—	22 Ga.	—
12	22 Ga.	.063	22 Ga.	.063	.063	3/4"	Alum.	—	22 Ga.	—
15	22 Ga.	.063	22 Ga.	.063	.063	3/4"	Alum.	—	20 Ga.	—
18	22 Ga.	.063	22 Ga.	.063	.063	3/4"	Alum.	—	18 Ga.	—
21	22 Ga.	.063	22 Ga.	.063	.080	1"	Alum.	—	18 Ga.	—
24	22 Ga.	.063	22 Ga.	.063	.080	1"	Alum.	—	18 Ga.	—
30	22 Ga.	.063	22 Ga.	.063	.080	1-3/16"	Steel	.032	—	1-1/2" x 1-1/2" x 1/8"
36	22 Ga.	.063	22 Ga.	.063	.080	1-7/16"	Steel	.032	—	1-1/2" x 1-1/2" x 1/4"
42	22 Ga.	.063	22 Ga.	.063	.080	1-15/16"	Steel	.040	—	1-1/2" x 1-1/2" x 1/4"
48	22 Ga.	.063	22 Ga.	.063	.080	1-15/16"	Steel	.040	—	1-1/2" x 1-1/2" x 1/4"
54	22 Ga.	.063	22 Ga.	.063	.080	1-15/16"	Steel	.032	—	1-1/2" x 3" x 1/4"

STANDARD DIMENSIONS LISTED IN INCHES

Unit Size	Hood Size		Unit Height B	Inside Curb Cap C	Over Hang D	Roof Opening Sq.	Curb O. D. Sq.	Damper Size Sq.	Approx. Wt. Less Motor (Lbs.)
	F x G	J x K							
06	32-5/8 x 25-1/8	38-1/8 x 25-1/8	14-1/2	15-1/2	4-13/16	11	14	10	45
08	32-5/8 x 25-1/8	38-1/8 x 25-1/8	15-7/8	15-1/2	4-13/16	11	14	10	45
10	35-1/8 x 28-1/8	42-1/8 x 28-1/8	16-1/2	17-5/8	5-1/4	13	16	12	50
12	35-1/8 x 28-1/8	42-1/8 x 28-1/8	18-1/8	17-5/8	5-1/4	13	16	12	50
15	38-5/8 x 31-1/8	46-1/8 x 31-1/8	21	20-1/2	5-5/16	16	19	15	65
18	42-1/8 x 34-1/8	50-1/8 x 34-1/8	22-1/8	25	4-9/16	20-1/2	23-1/2	19	85
21	45-5/8 x 36-1/8	54-1/8 x 36-1/8	22-3/8	28-1/8	4	23-1/2	26-1/2	22	120
24	50-5/8 x 41-1/8	60-1/8 x 41-1/8	25-5/8	31-1/8	5	26-1/2	29-1/2	26	145
30	60-5/8 x 48-1/8	73-1/8 x 48-1/8	29-3/8	40-1/8	4	35-1/2	38-1/2	34	210
36	69-1/8 x 56-1/8	82-1/8 x 56-1/8	32-1/8	46-1/8	5	41-1/2	44-1/2	40	335
42	81-1/8 x 64-1/8	90-1/8 x 64-1/8	36-1/2	54-1/8	5	49-1/2	52-1/2	48	515
48	86-5/8 x 70-1/8	93-1/8 x 70-1/8	38-3/4	58-1/8	6	53-1/2	56-1/2	52	505
54	94-1/8 x 78-1/8	100-1/8 x 78-1/8	44-3/8	64-1/8	7	59-1/2	62-1/2	58	690

METRIC (SI) DIMENSIONS
Imperial [IP] On Reverse Side

CARNES COMPANY 448 S. Main St., P. O. Box 930040, Verona, WI 53593-0040 Phone: (608)845-6411 Fax: (608)845-6504 www.carnes.com



STANDARD FEATURES

- Galvanized steel housing (aluminum optional).
- Galvanized birdscreen.
- Corrosion resistant aluminum curb cap.
- Integral motor overload protection on all standard single phase motors.
- Disconnect switch on all motors except explosion proof.
- Motors thru 10 HP are factory mounted.
- Adjustable pitch V-belt drives.
- Non-overloading, backwardly inclined wheel.
- Isolated suspended motor wheel-drive assembly.
- Spark resistant construction thru size 24.
- Polished CRS fan shaft with rust inhibitive coating.
- Two belts furnished on 5 HP and up.

Field wiring of motor, disconnect and conduit are to be in accordance with specifications and local codes.

STANDARD MATERIAL AND THICKNESS

Unit Size	Housing		Lid		Curb Cap (Alum.)	Shaft Dia. (CRS)	Std. Wheel	Wind Band (Alum.)	Diffuser (Galv.)	Support Frame (Steel Angle)
	(Galv.)	(Alum.)	(Galv.)	(Alum.)						
06	22 Ga.	1.6	22 Ga.	1.6	1.3	19	Alum.	—	22 Ga.	—
08	22 Ga.	1.6	22 Ga.	1.6	1.3	19	Alum.	—	22 Ga.	—
10	22 Ga.	1.6	22 Ga.	1.6	1.6	19	Alum.	—	22 Ga.	—
12	22 Ga.	1.6	22 Ga.	1.6	1.6	19	Alum.	—	22 Ga.	—
15	22 Ga.	1.6	22 Ga.	1.6	1.6	19	Alum.	—	20 Ga.	—
18	22 Ga.	1.6	22 Ga.	1.6	1.6	19	Alum.	—	18 Ga.	—
21	22 Ga.	1.6	22 Ga.	1.6	2.0	25	Alum.	—	18 Ga.	—
24	22 Ga.	1.6	22 Ga.	1.6	2.0	25	Alum.	—	18 Ga.	—
30	22 Ga.	1.6	22 Ga.	1.6	2.0	30	Steel	.8	—	38 x 38 x 3
36	22 Ga.	1.6	22 Ga.	1.6	2.0	36	Steel	.8	—	38 x 38 x 6
42	22 Ga.	1.6	22 Ga.	1.6	2.0	49	Steel	1.0	—	38 x 38 x 6
48	22 Ga.	1.6	22 Ga.	1.6	2.0	49	Steel	1.0	—	38 x 38 x 6
54	22 Ga.	1.6	22 Ga.	1.6	2.0	49	Steel	.8	—	38 x 76 x 6

STANDARD DIMENSIONS LISTED IN MILLIMETERS

Unit Size	Hood Size		Unit Height B	Inside Curb Cap C	Over Hang D	Roof Opening Sq.	Curb O. D. Sq.	Damper Size Sq.	Approx. Wt. Less Motor (Kgs.)
	F x G	J x K							
06	829 x 638	968 x 638	368	394	122	279	356	254	21
08	829 x 638	968 x 638	403	394	122	279	356	254	21
10	892 x 714	1070 x 714	419	448	134	330	406	306	23
12	892 x 714	1070 x 714	460	448	134	330	406	305	23
15	981 x 791	1172 x 791	533	521	135	406	483	381	30
18	1070 x 867	1273 x 867	562	635	116	521	597	483	39
21	1159 x 918	1375 x 918	568	714	102	597	673	559	54
24	1286 x 1045	1527 x 1045	651	791	127	673	749	660	66
30	1540 x 1222	1857 x 1222	746	1019	102	902	978	864	95
36	1756 x 1426	2086 x 1426	816	1172	127	1054	1130	1016	152
42	2061 x 1629	2289 x 1629	927	1374	127	1257	1334	1219	234
48	2200 x 1781	2365 x 1781	984	1476	152	1359	1435	1321	230
54	2391 x 1984	2543 x 1984	1127	1629	178	1511	1588	1473	313