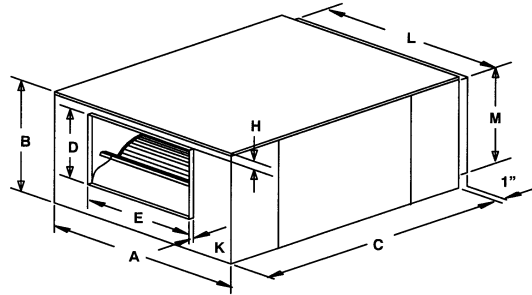


IP [English] Dimensions
SI (Metric) on Reverse Side

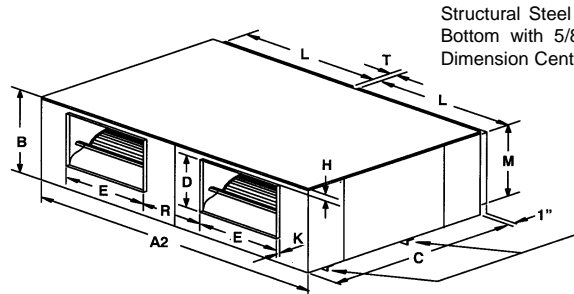
CARNES COMPANY, 448 S. Main St., P. O. Box 930040, Verona, WI. 53593-0040 Phone: 608/845-6411 Fax: 608/845-6470 E-Mail: carnes@carnes.com www.carnes.com



DIMENSIONS [Inches] — [Single Blower Units]

Note: Weight shown is less motor and drive

VGBA	A	B	C	D	E	H	K	L	M	WT. [Lbs.]
09	21	18	23	11-1/4	12-3/4	1	1-1/8	19	16	64
10	22-1/4	20	24-3/4	12-3/8	14-1/8	1	1-1/8	20-1/4	18	74
12	30-1/8	24-3/4	34	14-1/2	16-5/8	2-1/8	1-1/8	25-1/8	21-1/8	175
15	33-3/4	28-5/8	38-1/8	17	19-5/8	2-1/8	1-1/8	30-5/8	25-1/4	214
18	41-1/2	34	44	19-5/8	22-5/8	2-3/4	1-1/8	35-3/8	31-5/8	370
20	44-3/4	41-1/8	57-1/2	25-3/4	25-3/4	3	1-1/8	38-3/8	35-1/8	575



Structural Steel Angle Twinning Rail. Top and Bottom with 5/8" Mounting Holes on "G & S" Dimension Centres.

DIMENSIONS [Inches] — [Twin Blower Units]

Note: Weight shown is less motor and drive

VGBA	A2	B	C	D	E	H	K	L	M	R	T	WT. [Lbs.]
29	42	18	23	11-1/4	12-3/4	1	1-1/8	19	16	9-1/4	2	171
30	44-1/2	20	24-3/4	12-3/8	14-1/8	1	1-1/8	20-1/4	18	9-1/4	2	198
32	60-1/8	24-3/4	34	14-1/2	16-5/8	2-1/8	1-1/8	25-1/8	21-1/8	13-1/4	4-3/4	390
35	67-5/8	20-5/8	38-1/8	17	19-5/8	2-1/8	1-1/8	30-5/8	25-1/4	14-1/8	2-7/8	467
38	83-3/4	34	44	19-5/8	22-5/8	2-3/4	1-1/8	35-3/8	31-5/8	19	6-1/4	750
40	89-1/2	41-1/8	57-1/2	25-3/4	25-3/4	3	1-1/8	38-3/8	35-1/8	19	6-1/8	1200

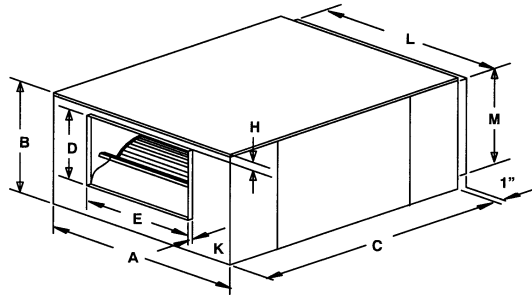
FAN NO. LOCATION	QTY	MODEL/SIZE	CFM	SP	FAN RPM	SONES	MOTOR			ACCESSORIES
							HP	ELECTRICAL	TYPE	

NOTES

PROJECT:	ARCHITECT:
CONTRACTOR:	ENGINEER:
DATE:	SUBMITTED BY:

SI (Metric) Dimensions
IP [English] on Reverse Side

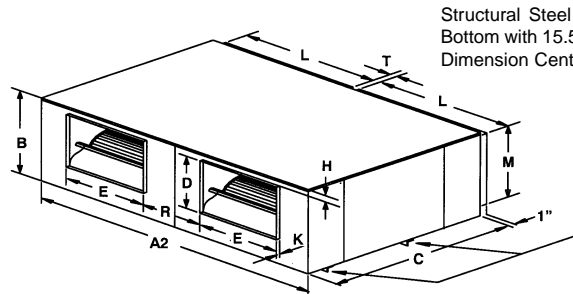
CARNES COMPANY, 448 S. Main St., P. O. Box 930040, Verona, WI. 53593-0040 Phone: 608/845-6411 Fax: 608/845-6470 E-Mail: carnes@carnes.com www.carnes.com



DIMENSIONS (Millimeters) — (Single Blower Units)

Note: Weight shown is less motor and drive

VGBA	A	B	C	D	E	H	K	L	M	WT. (Kg)
09	533	457	584	286	324	25	29	483	406	29
10	565	508	629	314	359	25	29	514	457	34
12	765	629	864	368	422	54	29	638	537	79
15	857	728	968	432	498	54	29	778	641	97
18	1054	864	1118	498	575	70	29	899	803	168
20	1137	1045	1461	654	654	76	29	975	892	261



Structural Steel Angle Twinning Rail. Top and Bottom with 15.5mm Mounting Holes on "G & S" Dimension Centres.

DIMENSIONS (Millimeters) — (Twin Blower Units)

Note: Weight shown is less motor and drive

VGBA	A2	B	C	D	E	H	K	L	M	R	T	WT. (Kg)
29	1067	457	584	286	324	25	29	483	406	235	51	78
30	1130	508	629	314	359	25	29	514	457	235	51	90
32	1527	629	864	368	422	54	29	638	537	337	121	177
35	1718	524	968	432	498	54	29	778	641	359	73	212
38	2127	864	1118	498	575	70	29	899	803	483	159	340
40	2273	1045	1461	654	654	76	29	975	892	483	156	544

FAN NO. LOCATION	QTY	MODEL/SIZE	CFM	SP	FAN RPM	SONES	MOTOR			ACCESSORIES
							HP	ELECTRICAL	TYPE	

NOTES

PROJECT:				ARCHITECT:			
CONTRACTOR:		DATE:		SUBMITTED BY:		ENGINEER:	