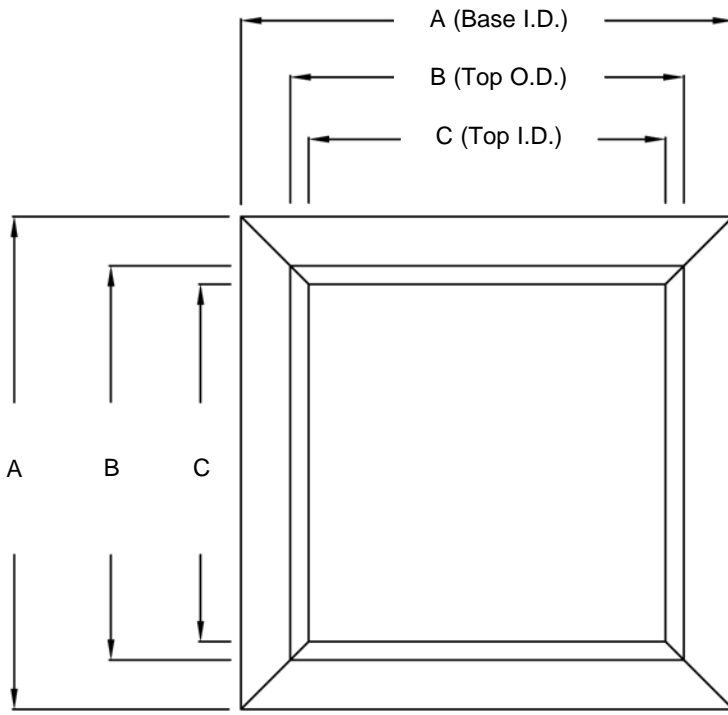


Imperial [IP] Dimensions  
Metric (SI) in Parentheses

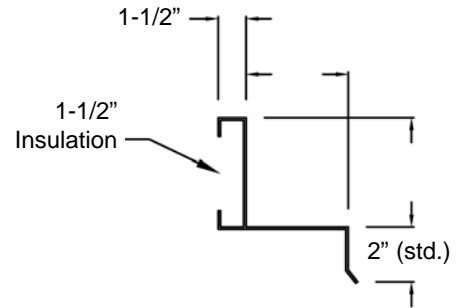
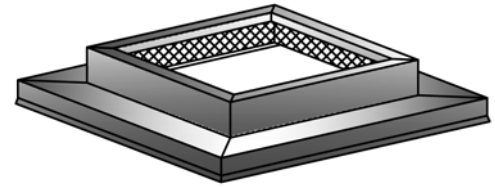
CARNES COMPANY 448 S. Main St., P. O. Box 930040, Verona, WI 53593-0040 Phone: (608)845-6411 Fax: (608)845-6504 www.carnes.com

**Standard Construction:**

Base I.D. through 43" = 18 gauge Galvanized Construction  
 Base I.D. 43-1/2" through 63" = 16 gauge Galvanized Construction  
 Base I.D. above 63" = 14 gauge Galvanized Construction  
 Features internal angle reinforcing with welded corners.



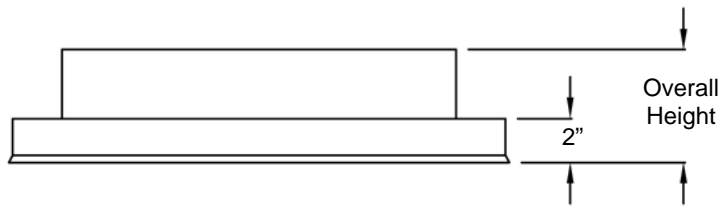
PLAN



JCAAG SECTION

**Adapter Dimensions:**

A = Old Curb Cap Dimensions  
 B = New Curb Cap Dimensions  
 C = B - 3"



ELEVATION

Qty.	Base I.D.	Top O.D.	Top I.D.	Overall Height	Tag-Description